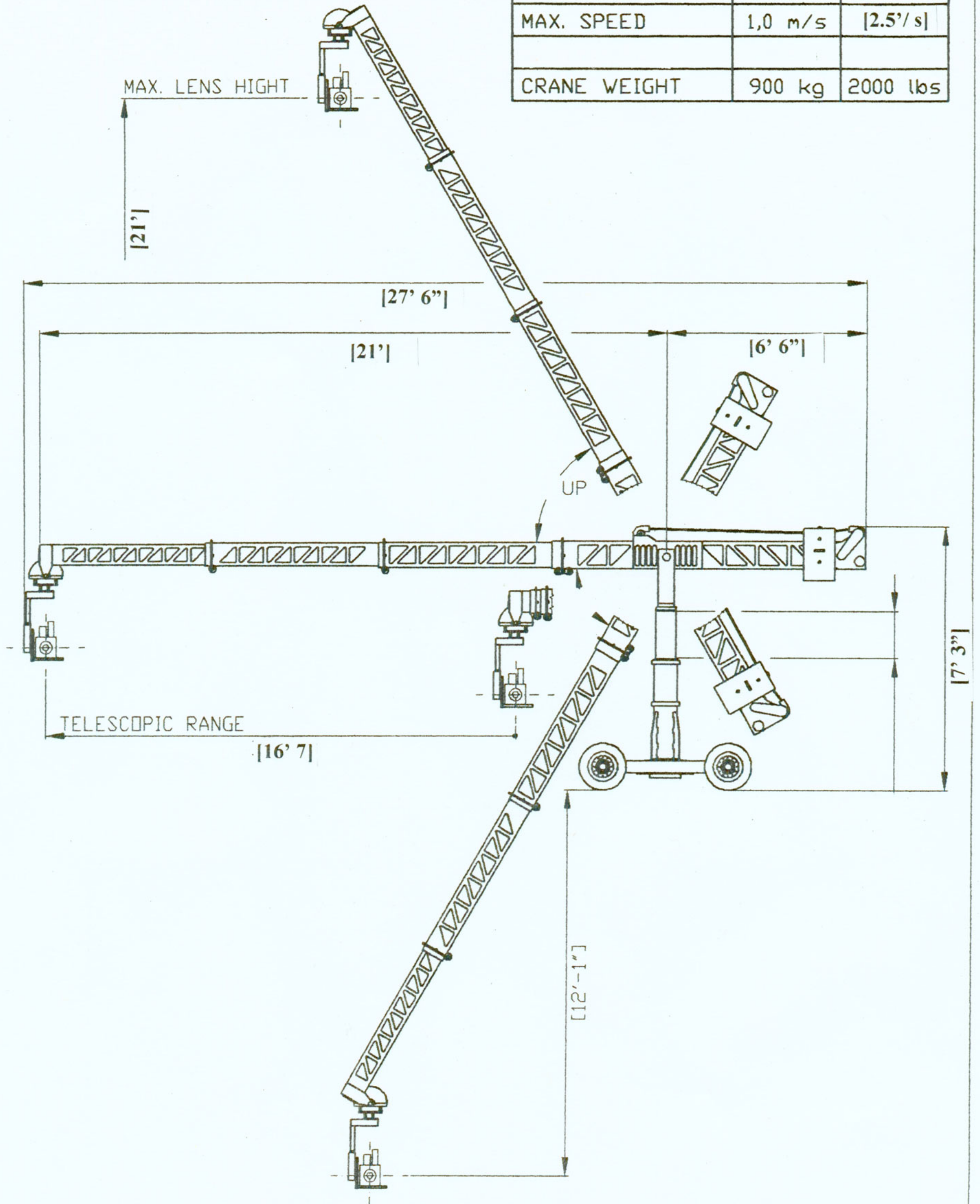


# TECHNOCRANE 21'

MAX. LENS HEIGHT	6,6 m	21'
MAX. LENGHT	8.05 m	[27' 6"]
MAX. SPEED	1,0 m/s	[2.5'/s]
CRANE WEIGHT	900 kg	2000 lbs



## 21' Technocrane Spec. Sheet

---

---

### Arm

Overall Length- Closed	14' 4"
Overall Length- Open	27' 6"
Fulcrum to Front End- Closed	7' 9"
Fulcrum to Front End- Open	21'
Tail to Fulcrum	6' 6"
Maximum Lens Height	21'
Weight (Arm Only)	396 lbs.
Tele Travel (Full Extend - Full Retract)	5.25 fps
Approximate "All Up" Weight	1870 lbs.

### Dolly

Length	5' 5"
Width	3' 7"
Width (Wheels Off)	2' 9"
Post Height (Ground to Bottom of Pan Pivot)	4' 5"
Highest Position (Tall Post)	7'
Lowest Position (Short Post)	6' 6"
Weight	
Column	
Maximum Tilt	53 degrees
Track Width	24.5"

### Remote Head

	Power Pod
Remote Head Type	Plus
Length in Shortest Configuration	1' 8"
Length in Tallest Configuration	2' 8"
Width	1' 5"
Depth	7.25 "
Weight	63 lbs.
Pan & Tilt Revolutions	Unlimited
Maximum Speed	
Digital Motion Capture Capable	No