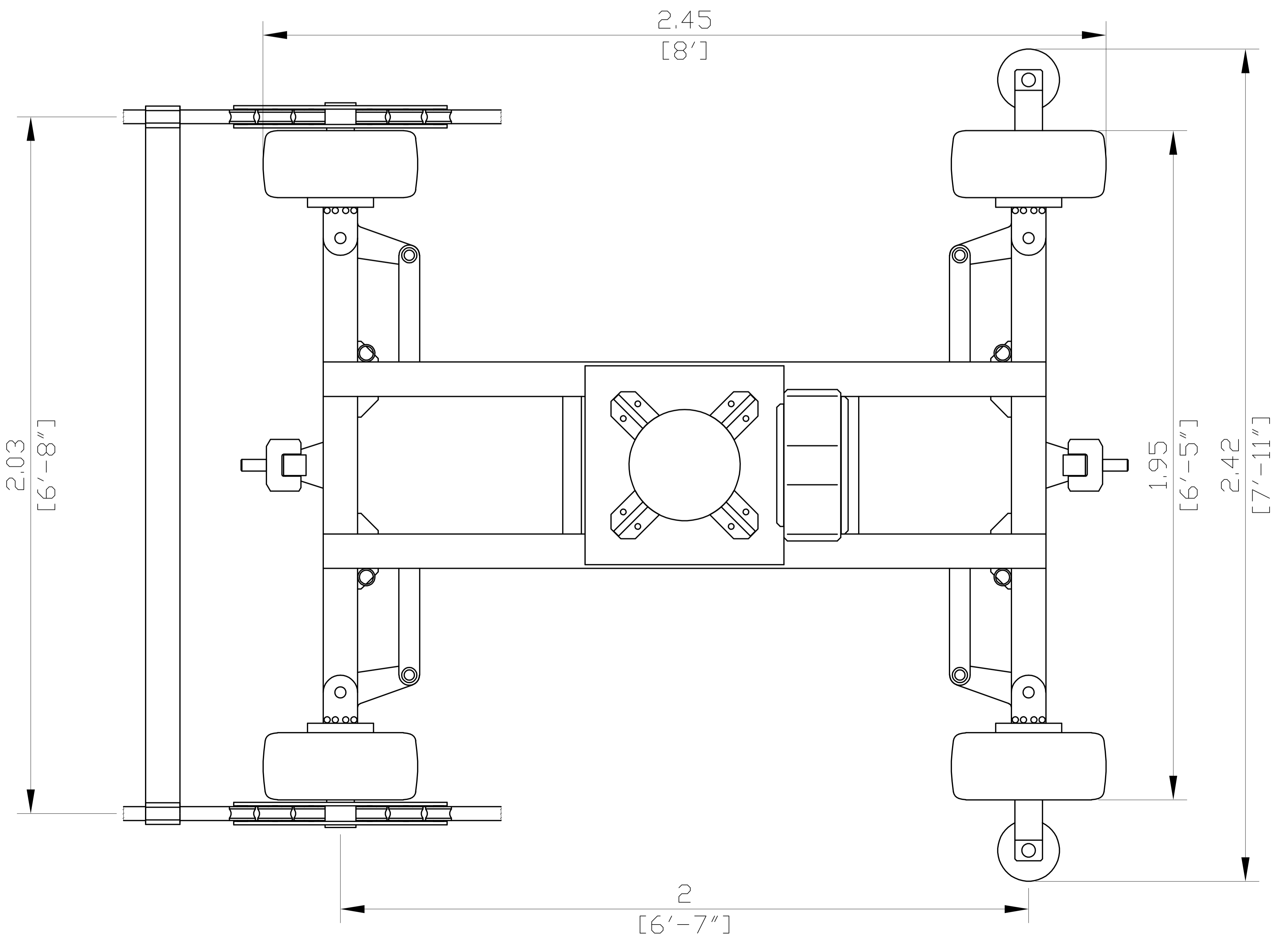
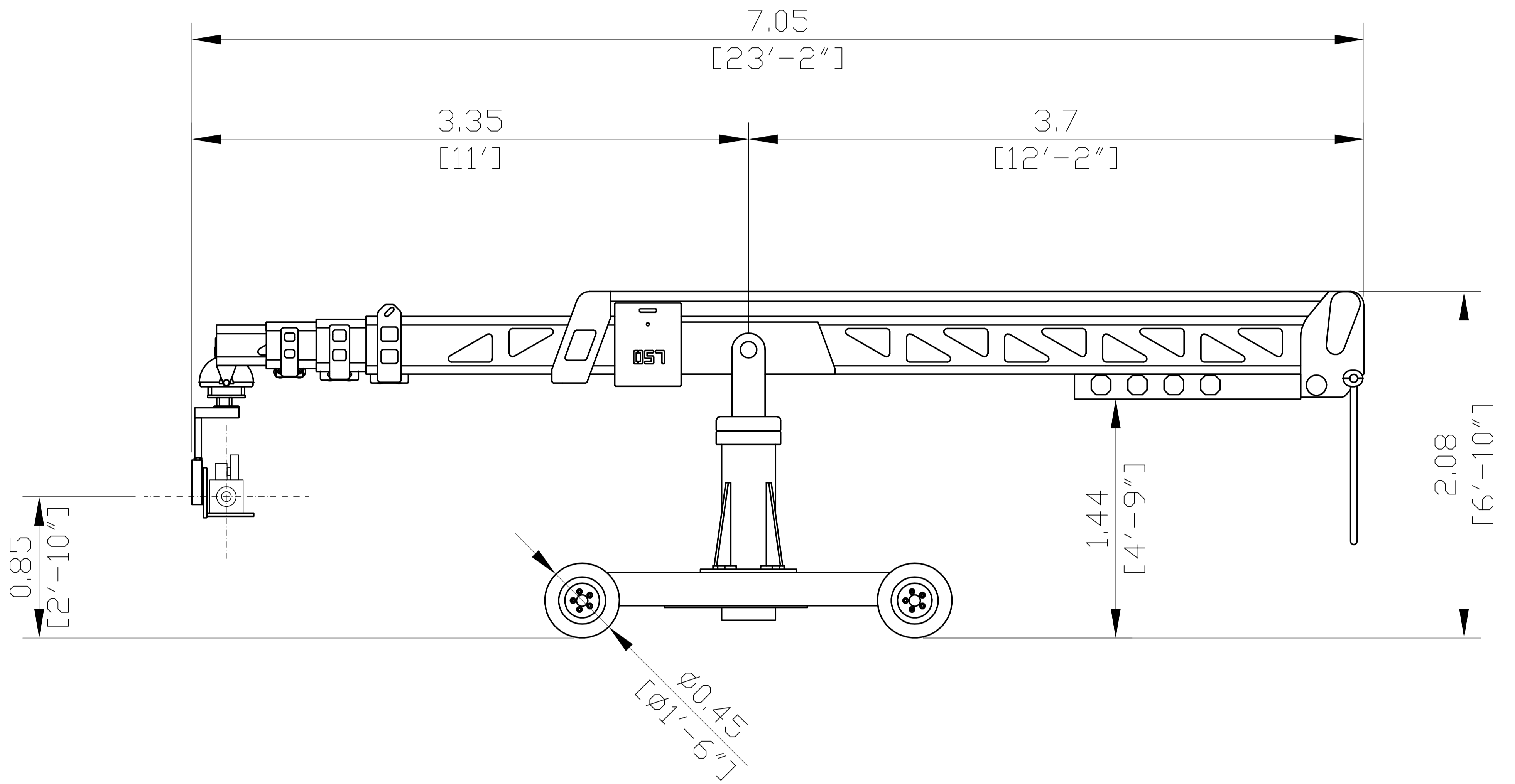
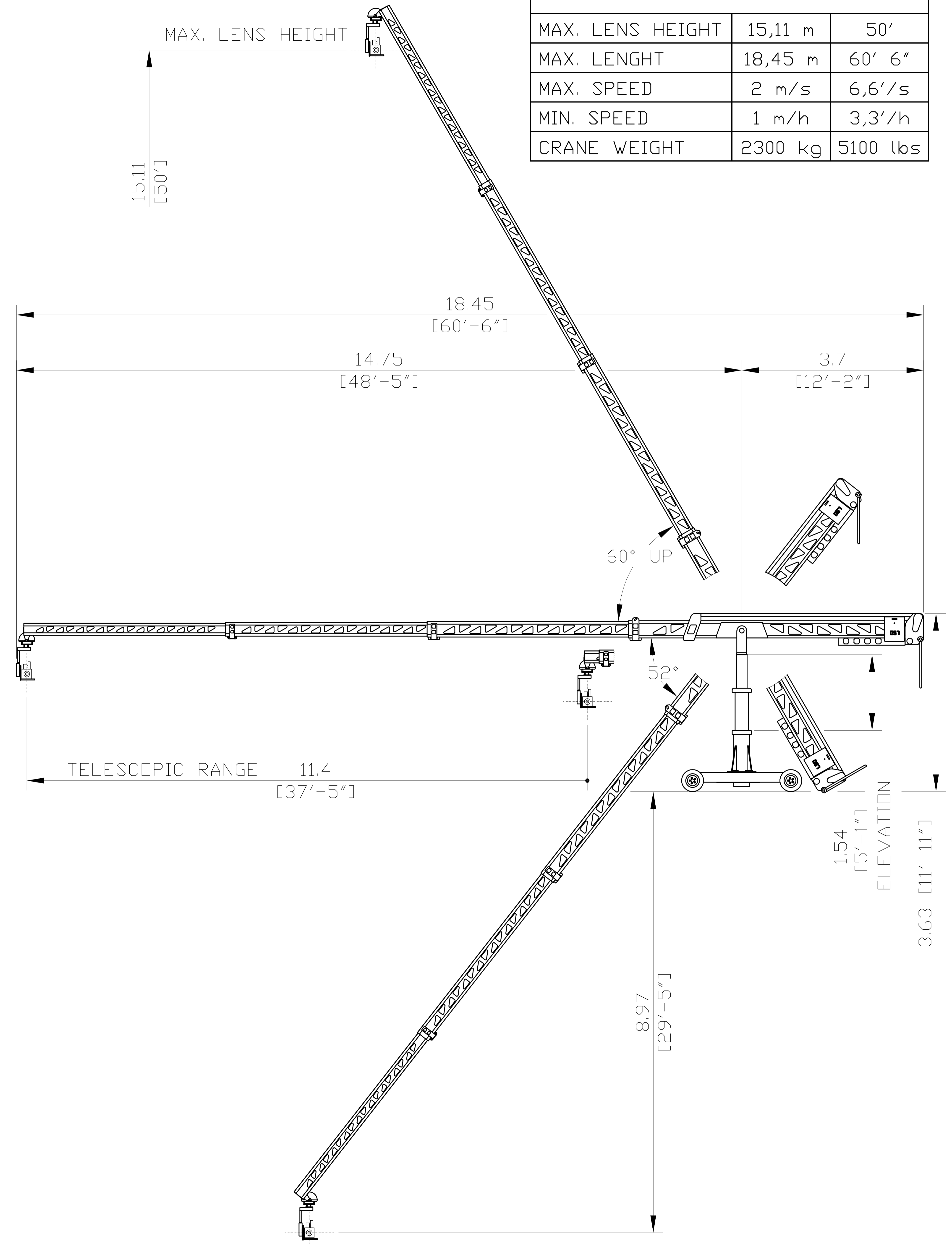


SUPERTECHNO 50



SUPERTECHNO 50

MAX. LENS HEIGHT	15,11 m	50'
MAX. LENGHT	18,45 m	60' 6"
MAX. SPEED	2 m/s	6,6'/s
MIN. SPEED	1 m/h	3,3'/h
CRANE WEIGHT	2300 kg	5100 lbs



50' Technocrane Spec. Sheet

Arm

Overall Length- Closed	23' 2"
Overall Length- Open	60' 7'
Fulcrum to Front End- Closed	11'
Fulcrum to Front End- Open	48' 5"
Tail to Fulcrum	12' 2"
Maximum Lens Height	50'
Weight (Arm Only)	1628 lbs.
Tele Travel (Full Extend - Full Retract)	6.6 fps
Approximate "All Up" Weight	5622 lbs.

Dolly

Length	8'
Width	6' 5"
Width (Wheels Off)	N/A
Post Height (Ground to Bottom of Pan Pivot)	N/A
Highest Position (Tall Post)	10'
Lowest Position (Short Post)	6' 10"
Weight	1267 lbs.
Column	906 lbs.

	60 degrees up/ 52 degrees dwn
Maximum Tilt	
Track Width	6' 8"

Remote Head

Remote Head Type	Z Head
Length in Shortest Configuration	2' 2"
Length in Tallest Configuration	3' 3"
Width	15"-18"
Depth	11.75"
Weight	70 lbs.
Pan & Tilt Revolutions	3
Maximum Speed	
Digital Motion Capture Capable	No